

### Procedural Information

Date of procedure: September 2015  
Location: Philadelphia, PA, USA  
Hospital: Thomas Jefferson  
University Hospital  
Physician: William B. Morrison, MD

# L5 transforaminal epidural injection

### Case Description

#### Case history

Obese 49 year old patient with degenerative disc and facet disease, radicular pain in L5 distribution.

#### Procedural details

L5-S1 neural foramen targeted. Because of narrow window and long distance to the target, Morrison Steerable Needle® was used. The needle was placed using standard oblique approach, avoiding the iliac crest. A slight adjustment superiorly was made initially by curving the needle upward near the foramen. As the foramen was approached the needle was straightened out and advanced to the optimal location.

#### Results and comments

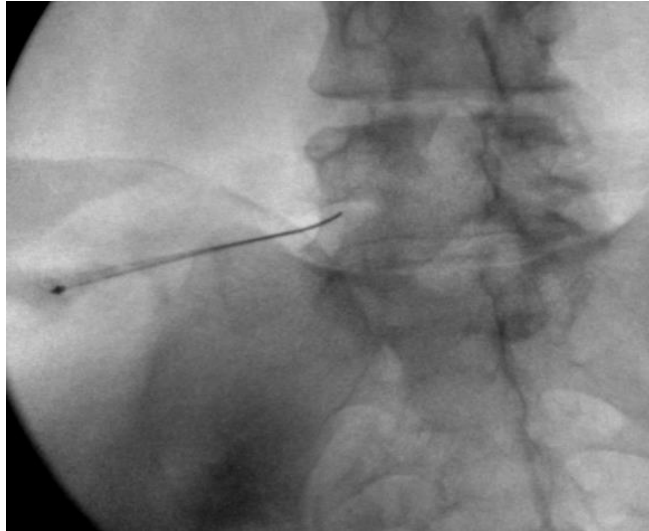
Transforaminal epidural injection via L5-S1 can be challenging due to the narrow window of access. This can be made even more difficult if the patient is large, requiring a longer needle and more accurate initial placement. Even with perfect initial planning, trajectory can be altered over a distance by fascia and the iliac crest. In this case Morrison Steerable Needle® allowed for a minor adjustment near the target, allowing optimal positioning without need for withdrawal and readjustment.

# Morrison

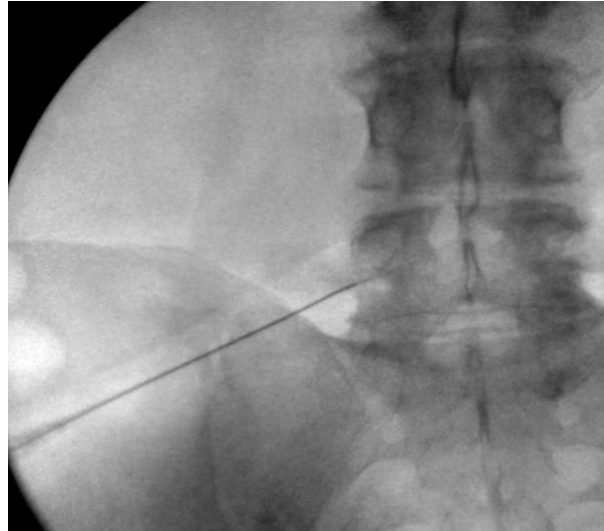
Steerable Needle®

Clinical Case Review 5

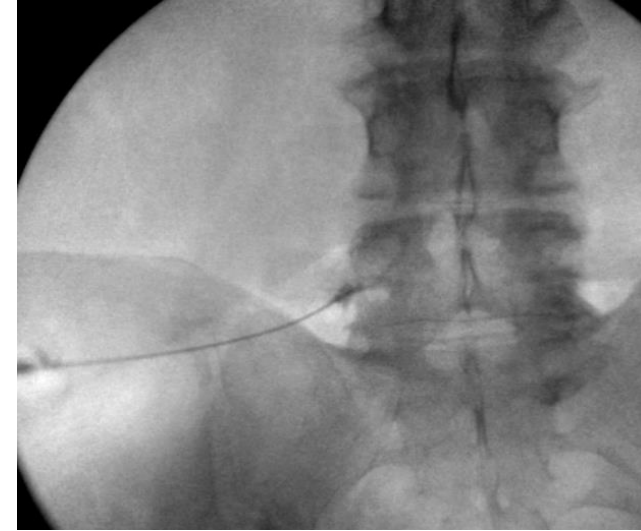
## L5 transforaminal epidural injection



Morrison Steerable Needle® is slightly adjusted near the foramen



Morrison Steerable Needle® is straightened up and advanced to target.



Injection of contrast, opacifying the L5 nerve root.

Case and image courtesy of William B. Morrison, Thomas Jefferson University Hospital, Philadelphia, PA, USA.

[apriomed.com](http://apriomed.com)

Before using Morrison Steerable Needle® read the instructions for use which accompany the product for indications, contraindications, warnings and precautions Morrison Steerable Needle® is a registered trademark of AprioMed AB. Patents pending.

**AprioMed** 