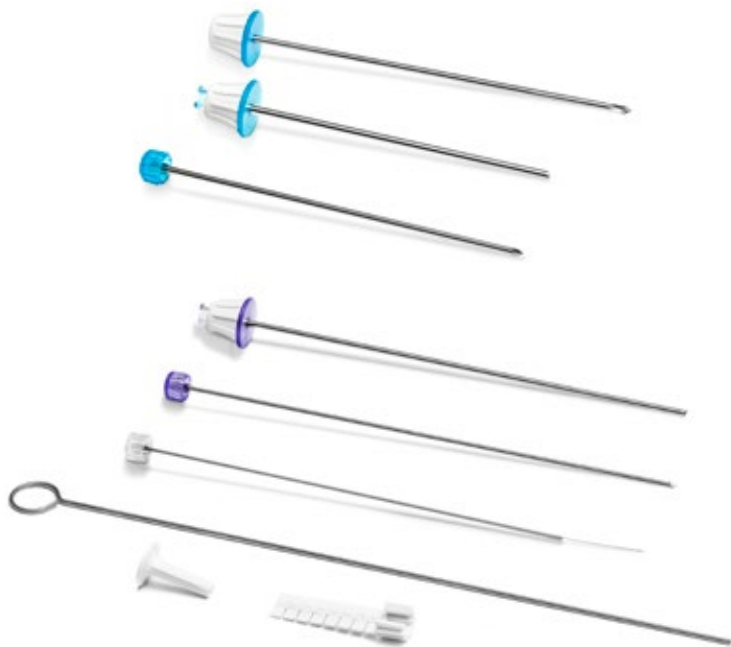


Bonopty[®]

BONE BIOPSY SYSTEM 12 GAUGE

Optimize tactility and efficiency during your procedures with Bonopty[®] products



Indication for use:

Biopsy of bone lesions.



AprioMed

- Gain access into the bone, even through thick cortical bone.
- Facilitate multiple sampling, or treatment of lesions.
- Achieve excellent core samples with few crush artifacts.
- Successfully sample somewhat sclerotic lesions.

ERGODYNAMIC HUBS

- Allow for increased user torque
- Enable finger tip control and tactility



UNIVERSAL LUER-LOK

- Enables secure connection for injections and aspirations



CORE LOCK

- Prevents sample loss by fixating specimen in distal tip of biopsy cannula
- Aids in keeping sample intact during retrieval

SAMPLE EJECTOR PIN

- Enables user to fully eject entire sample

SAMPLE EJECTOR GUIDE

- Provides protection for user against the sharp tip of the biopsy cannula
- Allows easier ejection of dense bone samples

DEPTH GAUGE

- Enables user to obtain an accurate sample length
- Provides mechanical stop for the biopsy cannula

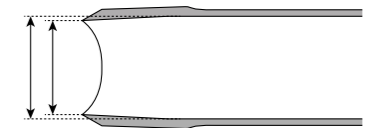
ECCENTRIC DRILL TIP

- Facilitates penetration of thick cortical bone
- Drills a hole larger than its' own diameter



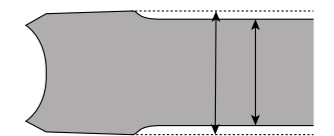
INNER REDUCTION OF BIOPSY CANNULA

- Allows user to obtain larger specimens
- Ensures preservation of specimen structure



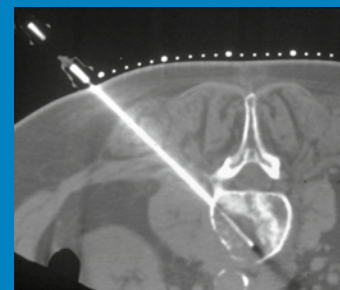
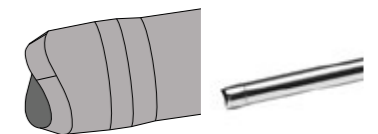
OUTER REDUCTION OF BIOPSY CANNULA

- Reduces friction during sampling by allowing easy penetration of cortical bone



DUAL-TIP CUTTER BIOPSY NEEDLE

- Enables large core sampling of somewhat sclerotic lesions
- Allows capture of more dense bone sample



Device description

Use of Bonopti® Penetration Set and Bonopti® Biopsy Set to sample a lytic lesion with bone structures in lumbar vertebrae.



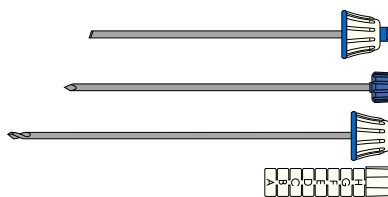
Ejection of sample from biopsy cannula using sample ejector pin and sample ejector guide

TECHNICAL SPECIFICATIONS

Bonopty® Penetration Set, 12G

Package contents:

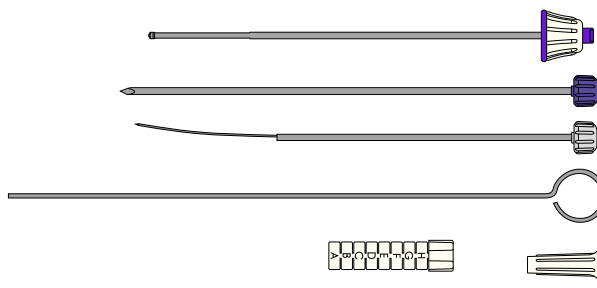
- Penetration cannula with stylet
Inner diameter 2.5 mm
Outer diameter 2.82 mm
Length 10 cm
- Drill
Diameter 2.45 mm
Length 12.7 cm
- Depth gauge



Bonopty® Biopsy Set, 13G

Package contents:

- Biopsy cannula with stylet
Inner diameter 1.80 mm
Outer diameter 2.41 mm
Length 16.5 cm
- Core Lock
- Ejector pin
- Ejector guide
- Depth gauge



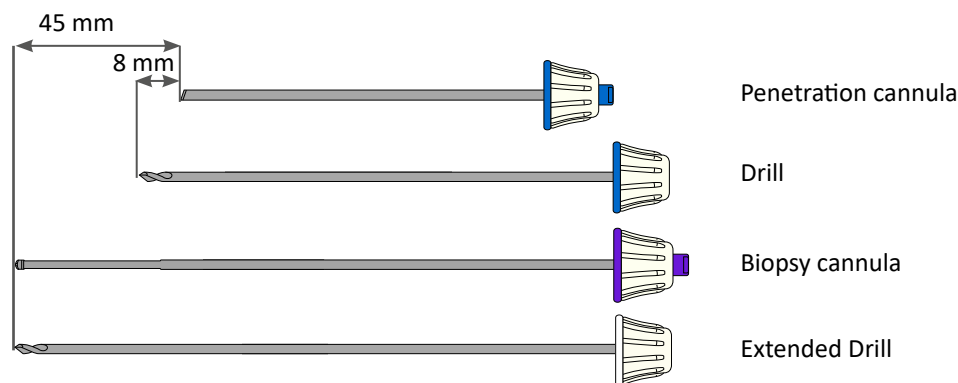
Bonopty® Extended Drill 13G

Package contents:

- Extended Drill
Diameter 2.45 mm
Length 16.5 cm




LENGTH COMPARISON GUIDE



ORDERING INFORMATION

Product number	Product description	Minimum Order Quantity
12-1272	Bonopty® Penetration Set, 12 gauge, 10 cm	5 units
12-1273	Bonopty® Biopsy Set, 13 gauge, 16.5 cm	5 units
12-1274	Bonopty® Extended Drill, 13 gauge, 16.5 cm	5 units

 Indication for use: Biopsy of bone lesions.
Before using Bonopty® read the instructions for use which accompany the product for indications, contraindications, warnings and precautions.
Bonopty® is a registered trademark of AprioMed AB. Patents pending.

HEAD OFFICE

AprioMed AB
Virdings Allé 28
SE-754 50 Uppsala, Sweden
Phone: +46 18 430 14 40
Free Fax (Int'l): +46 770 339972

US SALES OFFICE

AprioMed, Inc.
45 South Main St Unit 2
Derry, NH 03038, USA
Phone: +1 603 421 0875
Fax (US toll free): 866 239 179



info@apriomed.com / www.apriomed.com

APRIOMED develops, manufactures, markets and sells innovative medical devices and related services within the field of interventional radiology. We aim to deliver, in close collaboration with healthcare practitioners, innovative quality tools to achieve the most favourable solutions for radiologists worldwide. AprioMed is headquartered in Uppsala, Sweden, with a sales subsidiary in Londonderry, NH, USA. Our products are sold in more than 40 countries by AprioMed (direct sales in US, UK, Ireland and Sweden) and our local distributors.